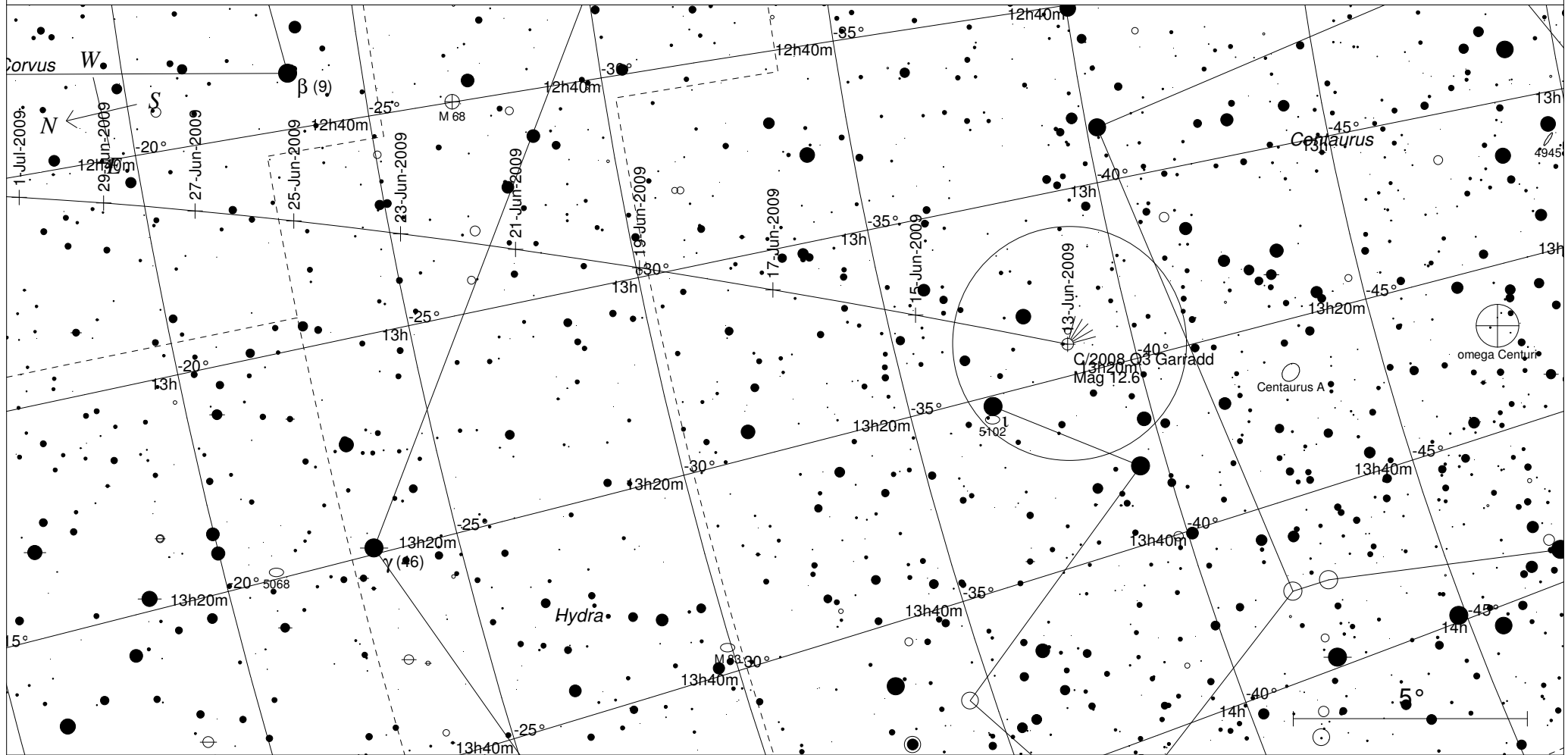


Comet C/2008 Q3 Garrad binocular map



| STARS | | SYMBOLS | | |
|-------|------|-----------------|--------------------|----------------|
| ● <4 | ● >9 | ● Multiple star | ◻ Dark nebula | △ Radio source |
| ● 5 | | ○ Variable star | ⊕ Globular cluster | × X-ray source |
| ● 6 | | ☄ Comet | ○ Open cluster | ○ Other object |
| ● 7 | | ☉ Galaxy | ⊕ Planetary nebula | |
| ● 8 | | ◻ Bright nebula | ⊕ Quasar | |

This map is for use with binoculars to see comet Q3 Garrad. It is in the same orientation as the spotters map. Use the spotters map to orient yourself, then use this map to locate the comet. The circle indicates the field of view of 10x50 binoculars.

Local Time: 18:41:07 13-Jun-2009
 Location: 34° 55' 12" S 138° 34' 48" E

UTC: 09:11:07 13-Jun-2009
 RA: 13h13m10s Dec: -32° 35' Field: 16.0°

Sidereal Time: 11:52:42
 Julian Day: 2454995.8827