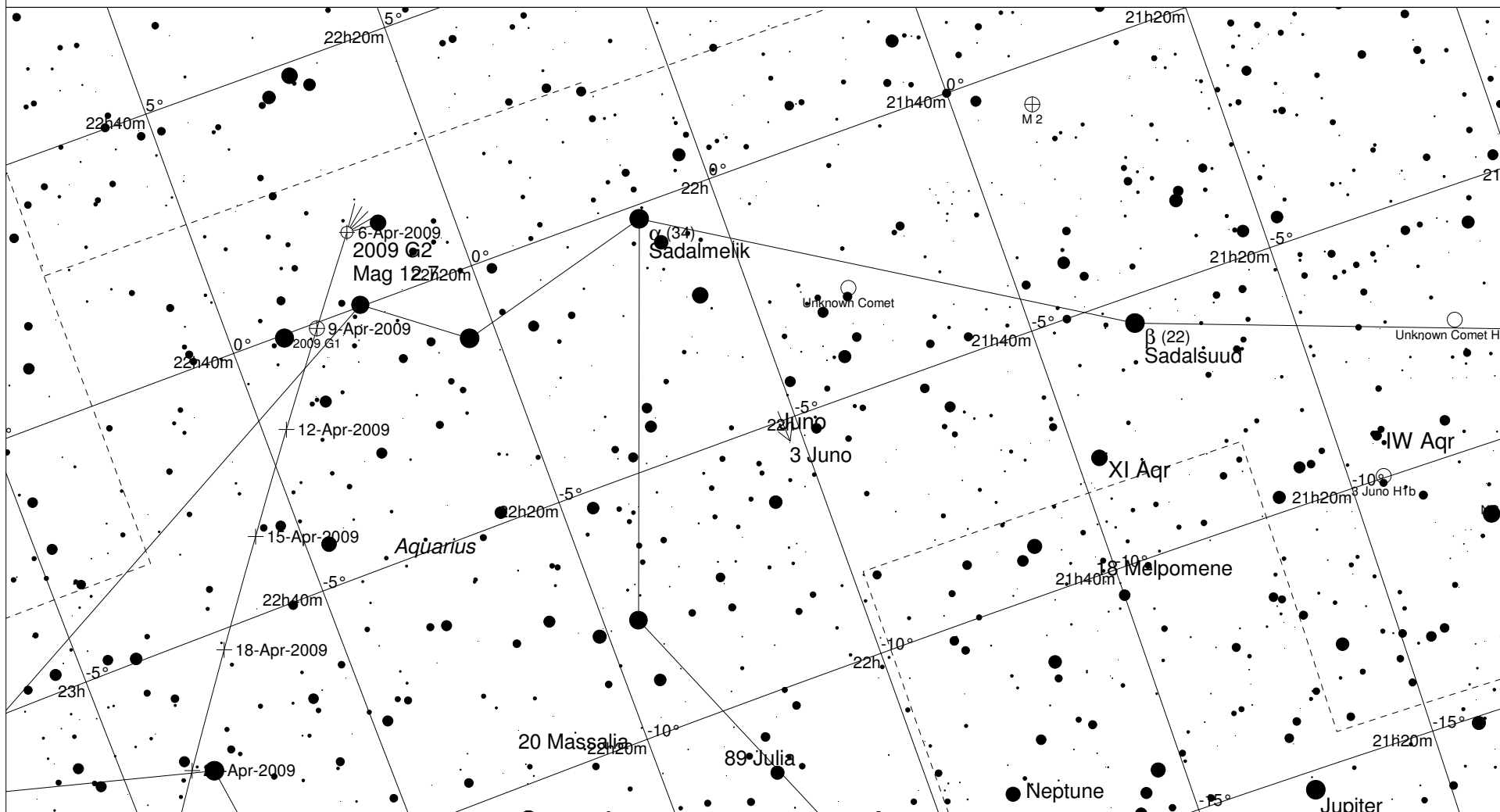


2009 G1 extrapolation from H1b to geocentric location and computed path



STARS		SYMBOLS	
● <4	● >9	⊠ Dark nebula	△ Radio source
● 5	○ Multiple star	⊕ Globular cluster	× X-ray source
● 6	○ Variable star	⊙ Open cluster	○ Other object
● 7	☄ Comet	⊛ Planetary nebula	
● 8	☄ Galaxy	⊞ Quasar	
	□ Bright nebula		

Location of Juno and Comet in H1b, and extrapolation to where comet is as seen from earth as well as MPC published ephemeris

Date of location 6 April 00:00 UTC

Local Time: 09:30:05 6-Apr-2009 UTC: 00:00:05 6-Apr-2009 Sidereal Time: 22:12:04
 Location: 34° 55' 12" S 138° 34' 48" E RA: 22h02m44s Dec: -4° 38' Field: 16.0° Julian Day: 2454927.5001