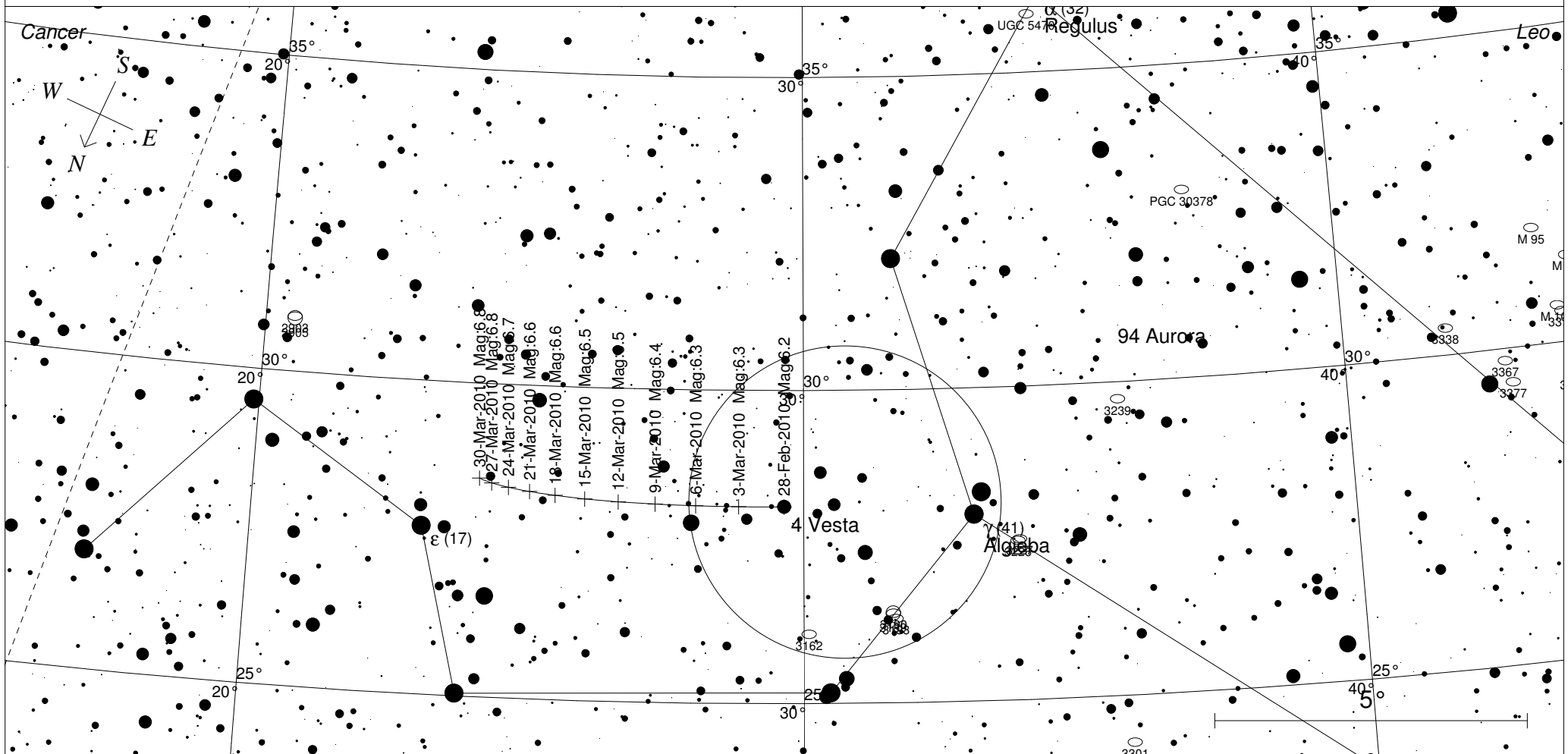


Vesta Binocular Spotters Map



- 30-Mar-2010 Mag:6.8
- 27-Mar-2010 Mag:6.8
- 24-Mar-2010 Mag:6.7
- 21-Mar-2010 Mag:6.6
- 18-Mar-2010 Mag:6.6
- 15-Mar-2010 Mag:6.5
- 12-Mar-2010 Mag:6.5
- 9-Mar-2010 Mag:6.4
- 6-Mar-2010 Mag:6.3
- 3-Mar-2010 Mag:6.3
- 28-Feb-2010 Mag:6.2

STARS		SYMBOLS			
● <5	● >10	● Multiple star	☐ Dark nebula	△ Radio source	
● 6		○ Variable star	⊕ Globular cluster	× X-ray source	
● 7		☄ Comet	○ Open cluster	○ Other object	
● 8		☉ Galaxy	⊙ Planetary nebula		
● 9		☁ Bright nebula	☉ Quasar		

Map for locating asteroid 4 Vesta in binoculars, 28Feb to 30 March. Use the Eastern Horizon map to locate Leo, Regulus and Algieba in the sky, then use this map to locate Vesta in the binocular star field. The circle represent the field of view of 10x50 binoculars.

Local Time: 23:00:00 28-Feb-2010
 Location: 34° 55' 12" S 138° 34' 48" E

UTC: 12:30:00 28-Feb-2010
 RA: 10h04m59s Dec: +19° 13' Field: 12.0°

Sidereal Time: 08:17:12
 Julian Day: 2455256.0208